



The Indra Report for

Hillary Clinton

26 October 1947
8:00 PM Standard time
Chicago, Illinois

Latitude 41 N 51 Longitude 87 W 39
GMT: 02:00:00 Time Zone: 6 hours West.
Tropical Zodiac



INTRODUCTION

This Report called INDRA (Version 1.7) creates a psychological mirror of your life, by interpreting the astronomical symbols present at your moment of birth using a large amount of prewritten text. INDRA describes your basic motivations, perceptions, inclinations, and character from a number of different perspectives giving a highly accurate composite view of your life. Your contradictory urges and drives as well as your chief focuses are described in INDRA. You will understand yourself better by studying this material. Your INDRA report provides guidelines for personal improvement and self discovery. Your life can improve quickly and dramatically if you apply the suggestions given here. By raising your aims and expectations you can obtain a deeper self-understanding and thereby resolve your inner conflicts and contradictions. INDRA is not meant as a substitute for astrological consultations, therapy, or the study of astrology; it is an interactive tool to enhance these things. Truly, INDRA provides a foundation for self-understanding.

The INDRA Report is divided into Twelve sections or chapters, reflecting the Twelve basic areas of your life.

- I. The Structure and Intent of Your Life
 - A. Hemisphere and Quadrant Emphasis
 - B. Elements and Modes Balanced
 - C. Ascendant and Midheaven.
 - D. The Conjunctions
- II. THE SUN - Your ego structure.
- III. THE MOON - Your personal life.
- IV. MERCURY - Your mental life.
- V. VENUS - Your love nature.
- VI. MARS - Your energy.
- VII. JUPITER - Your values.
- VIII. SATURN - Your obligations.
- IX. URANUS - Your search for freedom.
- X. NEPTUNE - Your spiritual aspirations and ideals.
- XI. PLUTO - Your need for fundamental change.
- XII. Summation
 - A. Your Uniqueness.
 - B. Your Easiest Areas.
 - C. Your Most Persistent Difficulties.
 - D. The Growth Aspects.
 - E. The Declinations.
 - F. Your Karmic Direction.



SECTION I. The Structure and Intent of Your Life.

There are four items of general interest that we want to take up here in Section I: A) Hemisphere and Quadrant Emphasis, B) Elements and Modes, C) The Ascendant and Midheaven, and D) The Conjunctions. These four categories give us an intelligent overview of how you structure personal experience and what you aim for in life. This general patterning gives us a context to understand the specific personal meaning of the material in Sections 2 through 11.

A. Hemisphere and Quadrant Emphasis

The different areas of life are laid out in the horoscope by spatial territories called houses. These areas of life show interests and general involvements for each person.

These areas can be grouped together for a vast overview of most basic inclinations of the person. The most useful general groupings of houses is into hemispheres and quadrants. Emphasis in a hemisphere or quadrant shows a particularly strong focus toward life from that perspective.

1. Hemisphere

The horoscope can be split into 2 equal parts, either horizontally (giving us the upper and lower hemispheres) or vertically (giving us the right and left hemispheres). The Upper Hemisphere shows the outer, more extroverted side of the personality, the Lower Hemisphere shows the more introverted and hidden side of the personality. In the Left Hemisphere planets are rising and this shows action. In the Right Hemisphere planets are setting and this shows reaction.

Most planets Below the Horizon

You have the majority of your planets below the horizon showing that you need time each day in isolation in order to recharge your batteries. You have a personal approach to life, preferring to work with people more than things and needing contact with the familiar in order to feel secure.

Most Planets Setting

You have the majority of your planets on the western half (or right-hand side) of your chart. Your natural tendency is to seek others' approval and to question the probable outcome of an action before putting your first efforts forward.

2. Quadrant

The two ways of splitting the horoscope into hemispheres can be applied simultaneously giving us four quadrants. The FIRST is called the quadrant of personality. The SECOND is called the quadrant of the environment. The THIRD is called the quadrant of relationship. The FOURTH is called the quadrant of service.

Most Planets in the Second Quadrant



You have the majority of your planets in the second quadrant showing that you will seek out the life experience that increases your sense of belonging, your sense of connectedness, your sense of personal expression. You aim to develop a more secure and meaningful social life that offers a wide spectrum of emotional expression and unfoldment. You desire to create.

B. Elements and Modes

The Elements and Modes show what we aim for in life. They show our broadest focus and in the most general sense, how we go about achieving our goals.

1. Elements

The four elements (fire, earth, air and water) are the most comprehensive inventory of the personality that we have. Everything in the universe including the human personality can be examined in terms of the four elements. FIRE is your basic enthusiastic urge, EARTH shows your concern for the material world, AIR is the element of abstract thought, WATER is your empathy impulse. Fire and earth are primitive and focus on the self. Air and water are derivative and focused on others. Fire and air are naturally extrovert, optimistic, active, and freedom oriented. Earth and water are basically introvert, pessimistic, passive, and security oriented.

Fire

You have a lot of fire in your chart. Fire is the element of energy, enthusiasm, and immediate and spontaneous focus on the self. You go from event to event selecting projects that give the full range of outlet for your energy. This process of selection is precognitive, instantaneous and automatic. People respond to the inspirational spark in you and your enthusiasm and boundless exuberance is evident whenever you are being your real self.

Earth

You have no earth in your chart. This means that the material world and its difficulties are not much of a focus for you. The resources in your life come and go without giving you a great deal of concern. You can always locate money or its equivalent when you are truly interested.

Air

You have just 20% of your chart in the air element. You have a magic blend in the air element. You have an ever-active intellect. Your eye is always looking, your mind is always attempting to grasp more and more information. You don't feel confident in what you know. This lack of confidence prompts you to keep on task with the learning process. You never relax on the subject of gathering new information. In the long run, you become quite scholarly in life, out-performing most others in the mental realm.

Water

You have an abundance of water in your chart. You are very emotional and quite empathetic. You feel others' pain so deeply, you can be moved off the path from your own goals unless you develop a strong sense of self-definition so as to separate out your own needs from those of others. You need something to do in life that gives full ventilation to your feelings. Your sentimental and emotionally potent approach to life polarizes people who will either appreciate you for this trait or be repulsed because of it. You tend to separate people, in your mind, into those that belong and those that don't. You find any habit, good or bad, very difficult to change.

2. Modes

The three modes are **CARDINAL**, **FIXED**, and **MUTABLE**. The modes of expression show how you act out your urges in the world. They represent your most basic responding mechanism toward all of life experience. The cardinal planets show direct expression in physical action, leadership ability and strength. The fixed mode planets in your chart show reaction, consistency, persistency, endurance and stubbornness. The mutable planets in your chart show synthesis, blending, malleableness, thought, forethought, debate and wisdom. The following statements show the way the three modes manifest in your life.

Cardinal

You have only 10% of your chart in the cardinal mode. Neptune is your only cardinal planet. Your spiritual aspirations and ideals empower you to act. Only when something you believe in is at stake are you apt to take a position of leadership. This striking out in a new direction is momentary as you prefer to either let others lead or follow well-trod familiar paths.

Fixed

A tremendous amount of your chart is in the fixed mode. You have endurance. Whether a course of action is good or bad you are more likely to stay with it than change. The principle of inertia is with you. When you rest, you have real difficulty getting going. When you are in motion, you have real difficulty stopping or even changing directions (even slightly). People find you a loyal friend and a tenacious enemy.

Mutable

You have 30% of your chart in the mutable mode. Adjustment to new circumstances is relatively easy for you. Part of your nature is very stimulated by change. You like to think about your experiences so as to accommodate any new information that occurs. This is not your only way of being but your favourite mode of operation can be reactive. Exposure to new ideas and methods can help you be calmer while still helping you maintain interest in life.

C. The Ascendant and Midheaven (Signs and Aspects)

1. The Ascendant

The ascendant is symbolic of our relationship to our immediate environment. This is the point rising in the east when we are born. One manifestation of our immediate environment is our physical body. The physical environment includes our body, our surroundings and our emotional and mental states. Thus, the ascendant tells us how our inner core expresses itself, and how we take in information from others and the universe generally. The sign rising in your horoscope tells us the type of energy you are processing, the type of physical body that you have for doing the processing and the natural inclinations you have in the personal arena in life. The planets in aspect to your ascendant tell us the kind of energy and stamina you have as natural allies in life.

The ascendant is opposite the seventh house cusp (the place where we meet others and the world). This axis (ascendant-descendant) is how we clarify ourselves through relationships. Planets in aspect to this axis indicate the types of people and the types of relationships we seek as well as how and why we seek them.

GEMINI RISING

You have an interest in motion and being versatile. You have a perennially youthful quality. You mirror others and are coloured quite a bit by what goes on immediately around you. You are a seeker of knowledge and truth and will look for it in your environment and in your relationships. Your loyalty is to principles and ideals rather than to people. Not that you aren't interested in people; on the contrary, you love them and look forward to meaningful, growth-oriented interactions. The light, effervescent childlike qualities in you need to stay anchored in an overriding value so that you always have a sense of direction in life; otherwise, the childlike qualities in you can become self avoiding and demanding as you get older. Your versatility and uniqueness open doors of learning and travel.

Sun Trine the Ascendant

You are very creative and project a powerful sense of yourself into everything that you do. People see you as someone who can and will do what you say you will do.

You carry the air of authority with you. People like you because you seem more real to them, more alive to them than most people. This makes your life easier and more successful than most. You are more comfortable with yourself than most people are and this quality shows. You have an easier time than most people in putting your positive attributes together in one place and expressing them.

Moon Square the Ascendant

You express your feelings in a way that can lead to misunderstandings and arguments. Some of the misunderstanding comes from communication difficulties and some of it comes from being at odds with others emotionally. Your personal life can improve when you make allowances for emotional differences between people in your community of family, friends, and lovers. You make your mark on the public consciousness, but your conflict between what you are doing and what you think you are doing stops this from being consistently positive. You have conflicting needs. In order to move forward, you must be free to act, unencumbered by other people's



judgments. You need to be connected to the thinking of those around you in order to see accurately where you are going. This conflict is real but resolvable through emotional balance and practice. Worry less about whether or not others understand your intentions. Don't let difficulties in your daily routines stop you from completing your obligations.

Venus Sesquiquadrate the Ascendant

You long for and express unique artistic and cultural taste. This gives your personality its special colour but is also responsible for many of your difficulties. You find it difficult to achieve stability in relationships while remaining honest in your self expression. You find personal life much easier and more fun if you are very tolerant in matters of taste. You attract and grow by association with people who have vastly different styles and judgments than your own. Many lessons in life are learned from these people. Art and beauty are important to you; consequently, your surroundings will always reflect your aesthetic choices. Your opportunities to grow are always present as you have a knack for seeing a higher synthesis any time a disagreement emerges.

Mars Semi-Square the Ascendant

You are often frustrated. Your energy and vitality are there but somehow your manner of self-assertion doesn't bring you the results that you think it will. Reorganizing your basic approach to life requires you to examine your motives for action very closely. Getting your mind to function right is the first step in having your actions be more effective. Strive to make your inner conflicts explicit so that you can understand and come to terms with them. Find safe, physical releases for your pent-up energy.

Jupiter Quincunx the Ascendant

The river of life is full and you have a contribution to make. Self clarification comes easiest to you when you are able to see how you fit in with the needs of the culture. Careful observation of how others express themselves and consistency of purpose help you achieve the happiness and feeling of genuineness that you want and deserve.

Uranus Conjunct the Ascendant and in the 12th House and unaffiliated.

You have an immediate attraction to the unusual in life. Your urge for freedom and wish to avoid boredom finds you involved with very different types of people. Periodically you have a need to be in isolation in order to make sense out of all the sensory stimulation that you find in your life. Your humanitarian instincts require you to find new solutions to commonplace problems in life, as there is an innate belief that a new and better way is there to be discovered.

Pluto Semi-Square the Ascendant

Self correction rather than criticism makes your life more pleasant. You may struggle with feelings of guilt for many years and not be able to bring about the changes in



your life that you would like. This is because you are of two minds and part of you is busy holding on to the past while part of you is trying to move forward. Let go of past hurts or you will repeat the mistakes in the future.

2. The Midheaven

The Midheaven is the high point in your chart. It indicates what you aspire for, what you see as your duty, and what authority and limits are about. Because of this basic meaning the Midheaven indicates how you live out your social station and what you do for your career. The point opposite the Midheaven is the fourth house cusp, referred to as the nadir, which is the indication of our roots, our heritage. This axis (Midheaven-Nadir) indicates the way we grow in life. The sign on the Midheaven shows our basic energy and approach toward dealing with the world. Planets in aspect to the Midheaven show qualities of our inner being that we wish to contribute to the world and that we wish to be fulfilled through our interaction with the outer world.

PISCES MIDHEAVEN

The natural high-mindedness that you approach career with may seem naive to others. You are the perennial youth. The world often helps you because of your ideals. You have an easier time when you stick to a single course of action long enough to see results.

Sun Trine Midheaven

Your bright and confident demeanour brings success in life. You have a powerful need to have a job that expresses your true personality. There is a dramatic quality that goes into all that you do. You are given a position of leadership several times in life without having to really earn it. You convey to people that you are capable of handling responsibility and authority. This happens because of who you are more than by what you do.

Jupiter Square Midheaven

You run into difficulties in your career climb as your values are out of step with those of your boss, your company, or your society. You like people and this quality of being works wonders for you. As soon as you cross into the learning mode of doing business with others (instead of constantly telling others how everything should be done) your foundation in career is secure and firm.

D. The Conjunctions.

A Conjunction occurs when two planets are in the same immediate area of the Zodiac. The conjunctions in your chart show central linkings of basic energies in your life. When one area (represented by a planet) expresses itself, it brings along the other area (represented by the other planet). When you are studying the rest of this printout of your life, keep in mind that linking of these energies is a central theme in your life and these areas should be studied together.

Mercury Conjunct Venus

Think of Sections IV. MERCURY - Your mental life, and V. VENUS -Your love nature, as a single unit. This Conjunction is a central indicator of the way you interact with people and your environment.

Mercury Conjunct Jupiter

Think of Sections IV. MERCURY - Your mental life, and VII. JUPITER -Your values, as a single unit. This Conjunction is a central indicator of the way you interact with people and your environment

Mars Conjunct Saturn

Think of Sections VI. MARS - Your energy, and VIII. SATURN - Your obligations, as operating together. This Conjunction shows your exacting nature and your desire for focus in life. This is a central theme upon which you will build many variations.

Mars Conjunct Pluto

Think of Sections VI. MARS - Your energy, and XI. PLUTO - Your need for fundamental change, as a single unit. Anything that effects one area of your personality effects the other. Your drives and motivations in life fluctuate between extremes. This Conjunction represents a very central focus of your life.

Saturn Conjunct Pluto

Think of Sections VIII. SATURN - Your obligations, and XI. PLUTO - Your need for fundamental change, as a single unit. These two areas affect each other mightily and show a composite foundation of serious intent present in your personality. This Conjunction represents a necessary focus in your life.

SECTION II. The SUN - Your Ego Structure

The Sun is the centre of the solar system. All life revolves around it within this sphere. In the same way, the ego is the centre of personal identity and gives integration and continuity to individual experience. In this sense, it might be said that the Sun shows character. This is the fixed pillar at the centre of the person around which all else circulates or revolves.

The sign placement of the Sun shows the centre of the individual's basic character. The sign of the Sun is the most primary indicator of the forms of experience you are attracted to. Further, this most important placement shows how and why you are attracted to these experiences.

The house placement of the Sun sign shows the primary area of expression for the individual in life. There is a psychological, emotional, and physical significance to the house placement of the Sun. Aspects to the Sun show ways that the core of the personality are linked to other component elements in the individual's life. Aspects to the Sun have a deep and overriding significance in the life of the individual and are generally more important, more prominent than other aspects in the chart.

SUN IN SCORPIO



Control is the main ingredient in life for you. You are strong-willed, thorough, passionate and powerful. You are courageous and completely willing to go it alone when necessary. You tend to have a rather serious outlook on life, always probing, looking for the depths. Your life becomes more meaningful when you learn to be truly forgiving, when you control your sexual nature without repressing it. Strive to overcome envy, jealousy and possessiveness. Your intense, all or nothing attitude is very useful under some circumstances but all of life is not a battlefield. You turn that force to a high channel at some time in life and the search for meaning becomes a spiritual quest.

Sun in 5th house

You seek out situations which bring you self-expression. You eke out self-definition through some ability to present yourself to others. An aura of the dramatic moves with you and colours all that you do. You have a strong presence and others tend to gravitate towards you.

Sun in 5th house Unaffiliated

The urge to create may bring you the opportunity to perform for others. One success builds on another as your confidence grows. You have an instinctive feel for what pleases others.

SUN IS IN SOFT ASPECT TO YOUR URANUS



You are always looking for a better way of being. You have keen perception for the untried and can envision things that might be, even though they do not yet exist. You have a sense for the dramatic and can express a new idea as if it was commonplace and common sense. You are unique and will often play an inspirational role in others' lives. You are prone to sudden romantic attachments as you recognize the uniqueness of others.

SUN TRINE YOUR URANUS

You embody excitement. The exceptions to the rules lead you on a path of self-discovery. Freedom calls. You respond. And, many improvements in your life come about as a direct result of your response to the call. You look for new, all inclusive solutions to life issues. You like people and can be a good friend.

SECTION III. The MOON - Your Personal Life.

The Moon inscribes a circle around the earth. It moves more swiftly than other astronomical bodies and thus represents day to day and moment to moment movements, adjustments and preoccupations. The Moon is the symbol of the personal life which is moulded and shaped by our environment, by events, and by social and familial expectations. Further, the Moon shows our responses to life which are based on our past habits, experiences, our heritage and our individual and collective cravings.

The sign placement of the Moon shows how you project yourself to the general public, how the instinctive and imaginative component of your mind operates, how you express your feelings and your most general experiences of your family and mother.

The house placement of the Moon shows how and where you make day to day adjustments. Further, it shows the things you are most interested in dealing with in order to gain emotional equilibrium.

The aspects of the Moon show the general characteristics of the personality that are emphasized. Planets in aspect to the Moon are symbolic of qualities in the personality that are used instinctively, habitually and with a high degree of versatility.

MOON IN PISCES



You are a died-in-the-wool sentimentalist. Your imagination can run away with the whole personality. You need grounding through the feelings or you may fall into a negative escapism. You are sociable and very solicitous of others. People like you for you are kind. But, you are so open to suggestion and psychically receptive to others' needs that you can lose yourself and end up dreaming other people's dreams. When you find yourself becoming lazy or drinking a lot or daydreaming more

than is healthy, get yourself a daily routine of meditation and mind-training which will refocus the visualizing property in you. Then, your good intentions for others, society, God and the universe will have a tangible grounding.

Moon in 9th house

You gain emotional stability by bringing about external changes. You have a strong imagination so you are on a continuous quest to better your perspective and perceptions. A certain underlying restlessness and love of adventure can bring about periods of travel. Voyages can be particularly pleasant for you.

Moon in 9th house Unaffiliated

Your basic wholesomeness and sincerity gives you an open mind and a good grasp of other people's situations. Your mind and opinions will change in fundamental ways with the unfolding of emotional experiences all through life.

MOON IS IN SOFT ASPECT TO YOUR MERCURY

You are intelligent with a good grasp of meanings and a good memory. You adjust easily to changing circumstances, draw quick generalizations and can communicate your findings to the public. You learn new things easily. You are able to expand and build on what you learn because you have a good imagination.

MOON TRINE YOUR MERCURY

Quick-witted and multifaceted, your mind and hands move from one thing to another with great dexterity. Your mind moves swiftly to the point and you can easily turn the right phrase to cast the current situation in the right light. You excel in any field where intelligence and communication skills are helpful. Your instincts are usually correct and in step with public sentiment.

MOON IS IN HARD ASPECT TO YOUR VENUS

You have a desire to come before the public, to be recognized by others. You are really shy and have difficulty putting your best foot forward. At times, you withhold yourself or even intentionally put your worst foot forward. You want to gain acceptance for who you really are rather than take people in with a surface charm. You long for significance and relationships are always in jeopardy until you know and accept yourself at a deep level.

MOON SESQUQUADRATE YOUR VENUS

You are caught short - trying to do too much with too little. Momentary poor judgment can cause financial loss, digestive upset, or relationship break-ups. Life improves if you are careful to assess the consequences of your actions before you act and express your charm and social consciousness in a way that is emotionally attuned to the society you live in.

MOON IS IN HARD ASPECT TO YOUR MARS

Outbursts of anger and emotional extravagance get you into trouble. You are always finding your limits by exceeding them. Better to learn to think before acting. Planned intervals of strenuous physical activity can take the edge off of contentious emotions and help you obtain some deeper balance. Don't eat when upset and your health will be better. Link your energy to some humanitarian, idealistic project and your perspective widens and your life improves.

MOON SESQUQUADRATE YOUR MARS

Enthusiasm and emotional explosion can lead to accidents. Learn to pace yourself so that your desire nature doesn't force you into immature patterns of behaviour. Emotionally, you are always playfully, powerful, and experimental; looking for ways to rise above your limits.



MOON IS IN SOFT ASPECT TO YOUR JUPITER

You are religious, dignified with a sense of justice which gives you a public image of being honourable and trustworthy. You are well liked and successful. You have a strong moral sense and are willing to take a stand on your beliefs. The good comes to you in life.

MOON TRINE YOUR JUPITER

Faith in life and basic, conservative instincts gives you position and prominence in your social circle. Others support you publicly and you are an inspiration to them. The public generally holds certain values as obvious truths. You subtly and instinctively reinforce the values and basic beliefs that power the decisions in most people's lives. Thus, you create a feeling in others that you are "one of us". You make the right choices. Your character seems trustworthy to others and you seldom disappoint them.

MOON IS IN HARD ASPECT TO YOUR URANUS

You get great ideas but have a tendency to act on a subject with brilliant insight and partial knowledge. The accuracy of your specific perceptions successfully insulates you from needed correction by others. When you become mentally defensive you fall into a pattern of emotional instability; that encourages you to promote less than your best ideas merely to be different. You can fall into a negative spiral of being a social outcast and an iconoclast. This is avoidable through finding the part of yourself that is genuinely interested in the welfare of humanity. As you get older, your emotional life becomes more stable as a direct result of (and in direct proportion to) your ability to express empathy for people in your daily life. Big abstractions have to be practiced to have meaning.

MOON SQUARE YOUR URANUS

An iconoclastic habit pattern and emotional instability throw you off kilter. Your need for security is threatened by your consistent nervous drive for personal freedom. Coming to terms with the unexpected is required of you in order to improve your abilities to achieve your goals.

MOON IS IN HARD ASPECT TO YOUR PLUTO

You easily get so emotionally "locked up" that it becomes difficult to alter or arrest a pattern once it has begun. You can suffer a lot by cutting yourself off from others. You may end a relationship that you desperately want if you feel the other person may reject you or abandon you sometime in the future. You demand a loyalty from others that isn't only unrealistic, but is also something you are incapable of or unwilling to give to others yourself. Further, you are capable of forming compulsive attachments where you hang onto a relationship long after the other person has left you emotionally or even physically. In either of these cases, clearly you have to come to terms with the issue of power and control. Don't be afraid of not being in control. Achieve self-control, understand your own emotions and your life becomes much



easier. You might explore your relationship with your mother as it had a much deeper effect on you than for most people. You have ability to work with large figures and with money and finance. You are able to conceptualize many different items of experience simultaneously. If your emotions don't get in your way, you become a leader in some realm.

MOON SESQUQUADRATE YOUR PLUTO

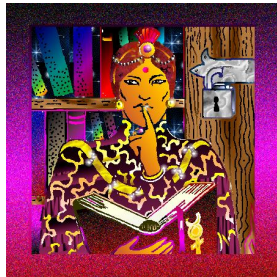
Rapid changes in your habits can help you get out of a difficult situation at the last minute. Emotionally, you fight a "rear guard" action trying to cover past mistakes through correct action in the present moment. As you understand the past your emotional responses to the present become better.

SECTION IV. MERCURY - Your Mental Life.

Mercury is the closest planet to the Sun. From the viewpoint of the earth it seems to dart back and forth across the face of the Sun, having three retrograde cycles a year.

Mercury is the planet of your mental life. It shows how you receive, process and disseminate information. The sign placement of Mercury shows your basic attitude and mental habits. The aspects of Mercury show your scope of vision and your methods for accomplishing tasks.

MERCURY IN SCORPIO



Your mind is penetrating and critical. Avoid being too secretive and you will learn more. Your manner of expression is diplomatic but doesn't truly reflect the peevish probing that is always going on. You are a shrewd negotiator who expresses even controversial ideas in a rather positive manner.

Your ideas are predetermined but you are smart enough to know that people don't usually respond favourably to you if they suspect this. You are in your own depths and keep your own counsel. Your life is smoother when you learn to relax, enjoy life, and adjust to changes going on around you.

Mercury in 5th house

You are fond of self-expression. Your interest in learning and communication can come out in the arts, in teaching or a series of hobbies. You may develop several close relationships to children or domestic animals.

Mercury in 5th house Unaffiliated

You are generally good with words. Others respond to your critiques and explanations. You are a natural orator, actor or teacher. You find everything interesting and thus are an enthusiastic student. Because you can see and relate to the potential in everyone to learn, you are a good teacher and instructor.

MERCURY IN ASPECT TO THE MOON

This indicates that you have a very personal, feeling mind. You have a very close personal use for your mental life. The details of this connection were discussed in Section III. The Moon -Your personal life.

MERCURY CONJUNCT VENUS

You have a certain charm and graciousness in your manner of expression. You have an artistic sense which can come out as beautiful penmanship. People like you and will often seek you out. You, in turn, are good at helping others express themselves.

You are courteous, diplomatic, and good at paraphrasing because you have an overview that comes from a multifaceted perspective.



MERCURY IS IN HARD ASPECT TO YOUR MARS

You can be a tireless worker and powerful promoter of a cause. You like working with instruments and machinery and have some mechanical aptitude. Your temper can be problematic, getting you into squabbles and disagreements where there doesn't have to be any. You have difficulty being either a diplomat or a leader so you are best to define your own work and territory and stick to it. Learn to take a break when things don't go your way, rather than becoming angry and frustrated.

MERCURY SQUARE YOUR MARS

You "jump to conclusions". Your mind doesn't draw logical conclusions but instead reacts from your desire to accomplish a specific goal. This clouds your judgment, presents you with mental conflict, and makes you angry. To improve your mind you need to spend time thoroughly understanding your desires and motives. You argue with those who hold ideas different than your own.

MERCURY CONJUNCT JUPITER

You have a fun-loving and optimistic outlook on life. You see the broader implications to what goes on around you and because of this you have a deep understanding of the troubles of the moment as being just that! Of the moment. Also, because of this long view of life, you don't always grasp the details of circumstances. You have a moral perspective and are concerned more with how things ought to be more than with how they are.

MERCURY IS IN HARD ASPECT TO YOUR SATURN

At a core level you don't think well enough about yourself. It may appear that you do on the surface, but the truth of the matter is your pessimism and complaining comes from a fear that life will not give you what you want. Learn to work smarter and not just harder. You see the virtue in discipline and often force yourself to do things you feel are good for you. In turn, you may resent others that don't work as hard. It is more difficult for you to get where you are going because you are always having to compromise between what you would like to do and what you feel is required. This conflict between desires and feelings of obligation is often the source of worry, stress, and wasted energy. For all this, you excel in any area that requires close, careful judgment.

MERCURY SQUARE YOUR SATURN

Mental laziness is your enemy. Your natural conservative "mind set" can take you along a path of success, but artificial worries and disagreements with authority can slow you down. Root out any negative attitude and do away with vindictiveness and your life is easy. Break big projects up into little pieces and be disciplined; then, your mind will take you far.

MERCURY IS IN HARD ASPECT TO YOUR PLUTO



You are bright and insightful but the very strength and depth of your vision can mislead you. In consequence, you get in your own way a lot. The magnitude of a project can intimidate you so that you don't even embark on it. You are a perfectionist and compulsive. You fear being judged by others as inadequate and this quality has you afraid to act. Of course, you do overcome this many times in your day to day life, but it goes smoother for you when you stop attributing negative motives to those around you. You are able to do this when you feel better about yourself. Periods of meditation and contemplation are necessary to get to know yourself.

MERCURY SQUARE YOUR PLUTO

You have a deep side to your thinking and you wish to know the hidden side of anything that you get interested in. Hard study is difficult for you because you see how much is entailed to do a job perfectly. Consequently, it is tough to get motivated. You tend to be mentally all or nothing.

SECTION V. VENUS - Your Love Nature.

The planet Venus shows the way you express your love nature and what you aspire for in life as good or beautiful. Venus has much to do with how you form your values.

The sign placement of Venus shows the type of love energy you have. The house placement of Venus shows the natural area of expression of the love energy. The aspects of Venus indicate how and under what circumstances you express the gentle and loving side of your nature.

VENUS IN SCORPIO



You have a love of physical pleasure. You are passionate and have an aura of secrecy about you. You like nice things and will alternately approach them and avoid them. You lack moderation and tact. You consequently go from being overly sensitive to others to being shut off. You are proud and extravagant, then very ascetic. Harmony comes to you only through stabilizing and overcoming your desires. This comes slowly by comprehensive re-examination of past experiences.

Venus in 5th house

You know how to enjoy life; you have a strong sense of the dramatic and love creative work. You have an interest in love and romance at an early age.

Venus in 5th house Afflicted

You may be too self-indulgent or too manipulated by your need for the appreciation of others. You make unrealistic demands on others and consequently may set yourself up for big disappointments. Think before you act. Watch that you don't engage in spending money that you don't have.

VENUS IN ASPECT TO THE MOON

You have an aspect between Venus and the Moon. This shows that you have a powerful emotional nature and are affected at a deep level by other people's thoughts and opinions of you. This was taken up in some detail for you in Section III. The Moon - Your Personal Life.

VENUS IS IN HARD ASPECT TO YOUR MARS

You are prone to emotional and financial excess. Your beliefs and values are at odds with your desires and it takes a lot of energy to integrate the two. You may become very interested in the baser, more physical side of romance. This is because you instinctively look for a common denominator between desires and values. The way out of this dilemma is to work at helping others and avoid putting energy into the selfish side of your drives.

VENUS SQUARE YOUR MARS

Conflict between love and desire causes a deep inner struggle. You look for "love in all the wrong places." Dancing, singing, and music are a way that you can create more of a harmonious atmosphere around you. There is a self defeating and self destructive chord in your nature which needs some instruction in the right direction in order to be more beneficial. First, be conscious of your tendency to react to others; then, you automatically start lifting out of the baser side of your nature. When you catch yourself acting in a way that is not in your best interest, concentrate on your ability to defer immediate pleasure for a long range good.

VENUS IS IN HARD ASPECT TO YOUR SATURN

You have some real difficulties in love relationships and with the material world. On the surface, you are a gentle soul just trying to keep what is yours and trying to stop the world from taking advantage of you. Underneath this veneer you are driven by fear and greed and your life is poorer for it. Your instincts are conservative and you are frugal with money but this isn't sufficient to offset poor judgment with people and things. Reappraise your way of being in the world. If your hand is closed no one can take something from you, neither can you receive what others wish to give you.

VENUS SQUARE YOUR SATURN

Fear of rejection confuses and limits your life. You know only too well that you want things, people, and relationships that you can't have until you relax and take some risks. The down side of any gamble can scare you so much that you are miserly with your money and your affections. When you finally do reach out (and you always do) you tend to do it poorly. Overcome fear. Practice self acceptance without a lot of negative comparisons and judgments.

VENUS IS IN HARD ASPECT TO YOUR PLUTO

You are a great manipulator and are often caught up trying to make things appear a certain way. You are the one who suffers from this tendency the most. You tend to get tied down to a pattern of endless repetition in relationships. You have difficulty in letting go even when a situation is painful. You are always dealing with people as symbols of others who are not even present. Love and power become confused with one another. You have a deeply lodged need to establish your sense of self worth. Once this is secure you can overcome your fear of being dissolved in a relationship built on equality and will start having more normal interactions. You need to be less concerned with how you appear to others and more concerned with how you are.

VENUS SQUARE YOUR PLUTO

Your extremes of emotion and expression stop you from being able to get what you are attracted to. If you see that you have been through the same picture a number of times; notice that your own fear, paranoia, and sedentariness is stopping you from making important deep changes. Relax. Trust. Change.

SECTION VI. MARS - Your Energy.

Mars is the planet of desires. It shows how you aim at your goals and how you power yourself toward your goals. Mars represents your most fundamental wants. The sign placement of Mars shows the fundamental nature of your assertions. The house placement of Mars shows the area of your life you are most likely to focus on. The aspects to Mars show how and to what extent your desires and assertions are involved with other aspects of living.

MARS IN LEO



You have a desire for leadership. Your energy is totally committed to whatever your impulsive nature leads you toward. You are benevolent and your method of getting what you want is to approach it as if you already had it. You are ostentatious, loyal and authoritative. You have a command of the field but you would benefit from being more in touch with the details of any project.

Mars in 2nd house

You have a desire for money. Your attention tends to focus on how much you are paid and how others view the monetary worth of your work. You see material reward as an important calibration of how much the world values your efforts.

Mars in 2nd house Unaffiliated

You are acquisitive. You have a knack for knowing the value of things material. Your drive to accumulate is rewarded. You achieve security and a solid base of operation in the physical world even though there may be some wide fluctuations in your financial picture.

MARS IN ASPECT TO THE MOON

Mars in aspect to the Moon shows that you have a lot of energy wrapped up in your instinctive consciousness. This insight is detailed out in Section III. The Moon - Your Personal Life.

MARS IN ASPECT TO MERCURY

Your Mars in aspect to Mercury shows that you have a strong desire nature attached to your thought processes. The impact of this aspect on your reasoning process is discussed in Section IV. Mercury - Your Mental Life.

MARS IN ASPECT VENUS

You have Mars in aspect to Venus. This aspect shows sex appeal and interest in romance. This aspect is covered more fully in Section V. Venus - Your Love Nature.

MARS CONJUNCT SATURN

You hold yourself back in life and though you are kind and very patient with others, your timing is poor and it stops you from getting what you think you want in life.

You are always trying to reform your desires and when you assert a want, a fear surfaces simultaneously. You give up many times, just when the world would have given you what you were asking for. You will think about a project and start it one minute too late to accomplish it. The difficulty with this aspect of your character is very slow to change. When it does change it is because you overcome your fears and your unbalancing desires. To the degree that this is accomplished you will achieve security in life. You should get strenuous physical exercise at least three times a week in order to have your energy work evenly and to be in good health.

MARS IS IN SOFT ASPECT TO YOUR NEPTUNE

You have the ability to see to the heart of a matter very quickly. Your basic nature has a mystical and spiritual quality to it. You have a subtle yet passionate quality in the way you express yourself that others respond to at an emotional level. Your natural field of activity in life should be one where greater emphasis is placed on the feelings and less on reasoning if this quality is to be used fully. There is an aesthetic side to your nature and it comes out in a way that is inspiring and reinforcing of a higher vision of truth. You have a special feeling for the performing arts.

MARS SEXTILE YOUR NEPTUNE

You express your drives and desires with colour and excitement. Your energy is always aimed at the long range goals. Your drives colour your social conscience but you have a belief in your ability to be "in tune" with the times and with what is good for the culture.

MARS CONJUNCT PLUTO

You have power plus. Wherever your energy is directed your life will go. There is a fascination with the deeper aspects of life and a definite pull to any position of control or power. Unfortunately, there is such a thing as too much energy. You can burn out, and have no energy for a while. You need to learn to regulate your use of force and enthusiasm. Sometimes force is unnecessary. After all, you don't need a gun in order to withdraw money from your own bank account. The positive side of this quality is that you can fight hard and long for something that you believe in. You literally will not take "no" for an answer. The negative side of this quality is that you are apt to develop a complex that operates as an independent variable within the personality but outside the normal constraints of the conscious ego structure. This can give you perplexing drives and desires that you feel compelled to put into operation and yet you don't understand. Long periods of self-discovery and conscious work may be necessary to corral this energy.

SECTION VII. JUPITER - Your Values.

Jupiter is the king of the planets. He is in charge of the order of creation. Jupiter shows your values, where you feel confident and in control, and where you feel you have something to teach others. The sign placement of Jupiter shows your values in life. The house placement of Jupiter shows the area of life you feel luckiest in and the area you receive the most help from other people and from the cosmos. The aspect patterns to Jupiter show the direct network of good and administrative power in your life.

JUPITER IN SAGITTARIUS



You are motivated by higher ideals than the material world. You are philosophical, inspirational, forward-looking and exceedingly tolerant. You are generous to the point of extravagance. You believe in yourself and life and consequently life believes in you. There is a light-hearted side of your nature that is forever liberated. Your values and aims in life are lofty and require you to set a very high personal standard. Living up to this standard gives you optimism and growth. Unless you are very well integrated (where your actions and values always agree) you will shuttle between two courses of action, the higher representing the real you, and the lower symbolizing your past. You are prone to a duplicity; your ideals are persevered in a higher abstract realm while less lofty characteristics determine the course of events in your life. When your ideals are too spiritual or too religious for your life pathway at the moment, you can be prone toward hypocrisy. If this is the case, you will engage in compensatory actions to acknowledge the freedom side of your nature. You may overspend or waste energy in purely symbolic actions that point toward an ideal. These actions don't move you forward much but also don't damage you much. You have a love of freedom that carries you far in your mind and on the surface of the earth.

Jupiter in 6th house

You are a very resourceful worker and can make a lot happen in relatively little time. You can be uncompromisingly disciplined when you see the need for it. Overdoing or overindulgence can be the source of health frustrations. You may have to work at learning moderation.

Jupiter in 6th house Unaffiliated

You are a great enabler. Even if the program and ideas originated with someone else, you know how to get things done. You are excellent in being able to attract the best from others in a work situation. You know how to play on the team.



JUPITER IN ASPECT TO THE MOON

You have an aspect from Jupiter to the Moon showing an interest in expressing values through your daily life. What you believe has more impact on what you do than it does for most other people. The information on this topic in Section III. (The Moon - Your Personal Life) may be helpful in grasping how you do this.

JUPITER IN ASPECT TO MERCURY

You have Jupiter in aspect to Mercury indicating a deep commitment to communicate something of value. You will have a commitment to knowing the truth and conveying it to others. You will find some further information on this topic in Section IV. Mercury - You Mental Life.

SECTION VIII. SATURN - Your Obligations.

The planet Saturn shows where you feel restricted. You feel obligations and fears through Saturn. Because of your feeling connected with Saturn you are either responsible or neglectful. The sign placement of Saturn shows the basic type of energy connected with your obligations. The house placement of Saturn shows an area of life that you feel restricted in and work hard to obtain the things that come to you. The aspects of Saturn show the most direct involvement of other areas of your life with your feelings of responsibility.

SATURN IN LEO



You are motivated by a fear of just being another person. You defend yourself when attacked with very dramatic and hyperbolic idioms. Avoid overreaction. You are striving to develop genuine heart qualities of warmth, sympathy and understanding. You are somebody, accept it, then don't take yourself so seriously. Develop a sense of humour.

Saturn in 2nd house

You have a restricted picture of yourself and of what you can accomplish. You work hard to accumulate worldly goods. You may often worry about money regardless of how much you have.

Saturn in 2nd house Unaffiliated

Your hard work brings stable and consistent success. Your conservative impulses make you a cautious planner and a good strategic investor with both your time and money.

SATURN IN ASPECT TO MERCURY

You have Saturn in aspect to Mercury showing that you have a serious approach to life and a more reserved outlook. This is discussed in Section IV. Mercury - Your Mental Life.

SATURN IN ASPECT TO VENUS

You have Saturn in aspect to Venus which shows that you take your love nature seriously and that you have a strong sense of duty. This is taken up in Section V. Venus - Your Love Nature.

SATURN IN ASPECT TO MARS

You have Saturn in aspect to Mars showing a desire to build strong foundations in your life. This aspect of your nature is taken up in Section VI. Mars - Your Energy.



SATURN IS IN SOFT ASPECT TO YOUR URANUS

You have a balance respect for the new innovative insights (that are always occurring to you), for what empirically works, and the traditional approaches to which we still have attachments. This can give you an air of diplomacy and stoicism. You know how to get things done and have some patience with circumstances in the world.

SATURN SEXTILE YOUR URANUS

You have good balance between the traditional and the innovative approaches to life. You develop diplomacy and know-how which help you find new ways of accomplishing and fulfilling your obligations.

SATURN CONJUNCT PLUTO

Deep secret fears and hidden anxieties prevent your life from becoming as successful and outgoing as you would like it to be. You have a special temperament for the study of history and anthropology. A study of the past can release you from present fears. Hard work brings recognition and success.

SECTION IX. URANUS - Your Search For Freedom.



The planet Uranus is beyond the orbit of Saturn and can't be seen without the aid of a telescope. It represents the sky in us, that which transcends the limits of finite life. Uranus raises the vibration of everything it contacts. The sign placement of Uranus shows your broadest striving for freedom. The house placement of Uranus indicates your area of direct unique expression. The aspects to Uranus indicate the way you express your need for higher consciousness.

URANUS IN GEMINI

You have powerful ideas that may or may not be practical. You are spontaneous and excitable, ready to move with a new idea. You may be unsettled or even annoyed by activity around you.

Uranus in 12th house

You are seldom at rest. Your mind seems to always be churning. You may find it more difficult to relax than most. You have a deep interest in the occult and metaphysical topics which have a bearing on all humanity. You are highly intuitive and your insights are not passive, but spawn you to action.

Uranus in 12th house Unaffiliated

You experience genuine self-transcendence in service to others because you can completely forget yourself and open up to the world. Others may not be aware of how profoundly driven you are by the urge to obtain personal freedom. This is because your ideals are linked to your vision of what would be good for all society.

URANUS IN ASPECT TO THE SUN

You have Uranus in aspect to the Sun showing that you are a freedom lover at heart and this forms a central feature of your personality. This aspect of your nature is explained in Section II. The Sun - Your Ego Structure.

URANUS IN ASPECT TO THE MOON

You have Uranus in aspect to the Moon. This indicates that you have an emotional pattern that expresses your uniqueness. This is explained in Section III. The Moon - Your Personal Life.

URANUS IN ASPECT TO SATURN

You have Uranus in aspect with your Saturn. This indicates that you are attempting to accommodate the urge for security and the urge for freedom. More detail on this blending is in Section VIII. Saturn -Your Obligations.

SECTION X. NEPTUNE - Your Spiritual Aspirations and Ideals.



The planet Neptune has an almost perfectly circular orbit. It represents the part of our nature that strives for perfection, that looks to some higher ideal. The planet Neptune rules the ocean and the part of us that is beyond the limits of the shores of personal existence. The culture moves with the cycles of Neptune and it is the primary indicator of your connection to the culture that you live in. The sign of Neptune shows an ideal that you desire to manifest. The house placement of Neptune shows the area of your life that you want to express this ideal in. The aspect patterns of Neptune indicate the most direct connections yet most subtle networking of your personality into the world at large.

NEPTUNE IN LIBRA

You have a powerful desire to create harmony because you believe that by doing so you reduce the pressure on people and create the circumstances of justice, peace, and understanding. You see humanitarian ideals not just as correct, but aesthetically pleasing.

Neptune in 4th house

You go to some trouble to secure the congeniality of your home environment. Your roots in life are tied to your spiritual outlook. You may live in surroundings that strengthen your intuition of psychic perceptions like being near a large body of water or in a spiritual commune.

Neptune in 4th house Unaffiliated

Spiritual longings grow stronger as you get older. You are able to create an island of solitude where you can retreat from the day-to-day pressures. As you get older, this inner fortress stops being so much an escape and more a pillar of stability in your personality.

NEPTUNE IN ASPECT TO MARS

You have Neptune in aspect with your Mars. This shows that you are idealistic and have a magnetic personality. How this works out in your life is described in Section VI. Mars - Your Energy.

NEPTUNE IS IN SOFT ASPECT TO YOUR PLUTO

You are fundamentally an idealist. You would like to see change come about in a way that doesn't destroy the existing social order. You believe in transition and transformation as saner and kinder principles of social change than revolutionary upheaval.

NEPTUNE SEXTILE YOUR PLUTO



Your higher ideals are the continuous recipient of forceful energy for change. Your long range perspective (even though this may at times be unconscious) is always toward your ideals winning out through deep self transformation.

SECTION XI. PLUTO - Your Need For Fundamental Change.



The planet Pluto represents the dark underground part of you. It shows your ability to transform the most fundamental properties in your own inner nature. The sign of Pluto is the way the obsessive, compulsive and committed part of your nature expresses itself. The house placement of Pluto shows the area of life where you make your most fundamental and most potent changes. The aspects to Pluto show the deepest most unconscious links in your personality structure.

PLUTO IN LEO

At best, you believe in yourself and are willing to stand on your own. You have a need for self expression. At worst, you are completely stuck on yourself, and have a strong desire to bend everyone else to your will.

Pluto in 2nd house

Your financial picture is in the extremes. You may well go from poverty to wealth or wealth to poverty at least once in life and maybe more than once. In either case money is a sensitive issue (perhaps even an embarrassment) and plays a large a role in your thinking. However, you do have ability and your skill brings you a good return for your efforts.

Pluto in 2nd house Unaffiliated

You instinctively know how to build on past successes. The material side of life takes care of itself eventually and you are free to work on other things. You may feel trapped by your success and abundance as it is all a "paper tiger".

PLUTO IN ASPECT TO THE MOON

You have an aspect of Pluto to the Moon. You have a deep connection to your mother. The nurturing side of your personality is being transformed during this life. The details of this are indicated in Section III. The Moon - Your Personal Life.

PLUTO IN ASPECT TO MERCURY

You have an aspect of Pluto to Mercury. This indicates that you have a profound mental life. This is detailed out in Section IV. Mercury - Your Mental Life.

PLUTO IN ASPECT TO VENUS

You have an aspect of Pluto to Venus showing that you have a very deeply entrenched love nature that you are transforming. The details of this are discussed in Section V. Venus - Your Love Nature.

PLUTO IN ASPECT TO MARS



You have an aspect of Pluto to Mars. This indicates that you have a very powerful desire nature that is being refocused. This aspect of your life is discussed in Section VI. Mars - Your Energy.

PLUTO IN ASPECT TO SATURN

You have an aspect of Pluto to Saturn. This shows that you are very impressed with things in the past. The working out of this impression is taken up in Section VIII. Saturn - Your Obligations.

PLUTO IN ASPECT TO NEPTUNE

You have an aspect of Pluto to Neptune which shows your involvement in a large cultural process. This involvement is described in Section X. Neptune - Your Spiritual Aspirations and Ideals.

SECTION XII. SUMMATION.

A. YOUR UNIQUENESS

Part of your style of being a person is tied to your personal method of adapting to and interacting with other people. This aspect of your personality shows itself through every aspect of how you deal with the environment. This method of your being encourages as well as reveals your uniqueness.

YOUR MAJOR PLANETARY ASPECT IS A SQUARE.

You have lots of energy and you need it. Your life changes through the resolving of conflicts. You are a fighter and you get clarity by drawing lines between the perceived good and bad of the moment. Your inclination is to be action oriented first, and reason things out after the battle. Your hunches are based on the odds. You take an empirical approach to problem solving. Your keyword is Energy.

YOU HAVE NO PLANETARY OPPOSITIONS.

You are great at being able to manifest the direction that you choose for yourself in life. This doesn't mean that decisions come easy for you or that you are always successful in achieving your goals, just that you are able to get your life functioning in the way that you would like. You are fast to learn that power and growth come to you by accepting responsibility for yourself and your life.

B. YOUR EASIEST AREAS.

The following material is an index of things that you have developed as inner resources. You may take them for granted, but in times of re-evaluation and rest this part of your personality can provide you comfort and strength.

Well-Aspected Sun.

Your ego structure serves the natural place of giving your life balance and symmetry. You have a potent central core that allows you to achieve a sense of integration. This potency aids you immensely by supplying you with inner poise under all circumstances. This doesn't make your life easy but does help you get perspective on experiences.

Well-Aspected Jupiter.

Your sense of humour and your optimism buoys you up. Your self confidence opens doors for you. The fun loving, joyful side of your nature aids you in all forms of achievement. Your belief in yourself opens doors. Improvement comes through your faith in life.

Well-Aspected Neptune.

Your insights and ideals give you the ability to rise above the circumstances in your



life that seem limiting. Your comprehensive and ever-expanding outlook can be a source of inspiration for others.

Sun in the Fifth House.

Your talent for self-expression is a great asset. You put your best foot forward when you are creating something. Whenever life stagnates ask yourself if you are having any fun with what you are doing. Often you are able to improve circumstances by simply demanding more enjoyment out of life.

Jupiter in Sagittarius.

Your instinctive judgment of what is important in life has you moving in the right direction in the most general terms. Your life betters through the study of philosophy, religion, faraway places and ideas, as well as the spiritual path.

Neptune in the Fourth House.

Your natural feeling for your own life and life in general is very positive. Family and your emotional roots can create a pattern of positive expectation that you can always fall back on.

C. YOUR MOST PERSISTENT DIFFICULTIES.

This material describes the "cutting edge" of your work on yourself. The thoughts rendered here are meant as further guidelines for growth. You should take difficulties and challenges in the right spirit. They are always positive indicators as to how you can experience the joy of becoming a better person and more like your REAL SELF.

Afflicted Venus

You sell yourself short in love. You have great difficulty getting your true emotional intentions to the surface and self-expression can be awkward, overly self-conscious, or ineffective in achieving your heart's desire. The key to personal development in love and interpersonal expression lays in setting your emotional priorities. This leads to less conflict and to the experience of more satisfaction.

Mercury in the Fifth House

You have a natural skill for creating and imitating. This quality of your mental life really comes into its own when you are able to expand your normal mode of mental activity to gather new information without recourse to and use of the material.

Venus in Scorpio

Your love nature is so intense that you easily scare away those you would attract. You love and hate with such extreme that you only find peace through a higher communion of the spirit. Practice altering your vibration so as to escape self victimization through petty attractions.

Mars in the Second House

You suffer from being too result-oriented in your actions. Learn to direct your energy toward activities of intrinsic worth even if you will not personally gain from them.

Jupiter in the Sixth House

You throw yourself into action without seeing the big picture. Often, you end up putting energy into a situation that cannot work out as favourably as you wish or expect. Check your enthusiasm until you see your future picture of yourself clearly enough that you can envision how it connects with your present course of action.

Saturn in Leo

Self-doubt and fear of others propels you into self-defeating forms of personal defence. This form of protectionism makes it hard for others to see your better side. By becoming more loving and more open, your dramatic inclinations help you build bridges rather than barriers between you and others.

Pluto in the Second House

You have great extremes in personal resources in life which reflects the basic contradiction of wanting to be connected to all of life and wanting to be totally private in your appraisal of self-worth. You need to overcome greed and guilt in order to fully transform your life.

D. THE GROWTH ASPECTS

The Growth aspects operate differently than other aspects in your chart. While it is possible to use them descriptively, as showing finer shades of meaning within the chart, we wish to use them in a different manner for our purposes. The growth aspects are tools of self development. If you apply attention to the various qualities in your nature linked through the growth aspects, you will see positive change over time. These qualities generally do not show quick effortless solutions, but instead show a path of change requiring exertion and emotional honesty. Under these circumstances, the way these aspects of your nature change through time are truly amazing. The qualities mentioned here can be the very mechanisms to release the highest, finest side of your nature.

Sun in Growth Aspect to Moon

You undergo development throughout this life via the process of your ego drives learning to work in harmony with the circumstances of your everyday existence. As you get older you ask more of yourself as you adjust to circumstances of each situation rather than fighting them. To do this without lowering your goals, standards, and expectations is the trick, but it is also the path of personality maturation.

Sun Quincunx Moon

Your perceptions of others and of life circumstances alter as you get older. As others misunderstand your intentions and you misjudge others' motivations, natural corrections occur for you. It is through concentrating on the core values of communication in relationships that you make major adjustments between your ego drives and your emotional needs. This becomes a critical mechanism for personal growth and development.

Sun in Growth Aspect to Jupiter

You have an optimistic and formal side of your personality that surfaces only slowly. You experience frustration because you can perceive more than you can do. Learning to work with your own limits of endurance without compromising your values is your method of growth.

Sun Semi-Sextile Jupiter

Time and again you have to start projects over because you tend to confuse your priorities and build beyond your foundations. Once timing and procedures are learned your natural optimism emerges in a way that is constructive. You suffer some difficulties when your projects, while performing well in one environment, do not work so easily or directly when translated to a larger scale or a new context. Your belief in life serves you well when it is tempered with patience and good prioritizing.

Mercury in Growth Aspect to Uranus

You come up with ideas that sound great but are not possible to materialize. Remember, genius may be partly inspiration but not every idea is worth the effort to make manifest. Your inner life can generate thousands of good ideas that you can't do anything with. Be discriminating and your efforts are less likely to be wasted.

Mercury Quincunx Uranus

The new and unusual things that occur to you may carry you far from the basic needs of your everyday life. Good ideas do not necessarily require you to act immediately to bring them about. Positive innovation will require you to alter yourself and your basic habits before you will see much change in the world or your environment.

Jupiter in Growth aspect to Uranus

Learning how to turn your abrupt bursts of enthusiasm to your benefit becomes a mechanism for growth. There is an inner belief that you can obtain freedom and personal satisfaction in life by throwing yourself into action quickly. This is correct but you will have to work on the techniques of self expression and substance of your life goals in order to get the higher side of this aspect of your nature to function correctly.

Jupiter Quincunx Uranus

Overly ambitious, you have an intuitive grasp of the big picture, which stems from optimum flexibility of your values. You are easily led by your impulses to quickly adjust to deep changes in your values. Without discipline you will be in trouble because your enthusiasm will carry you into uncharted waters. Expression of your energy can get you into trouble. Slowly, you learn to harness this expression into something truly creative.

E. THE DECLINATIONS

There is another dimension to your astrology chart. This has to do with planets being the same distance from the celestial equator. When both planets are on the same side of this plane there are called parallel. When the planets are the same distance but on opposite sides of the celestial equator they are referred to as being contra-parallel. Both of these aspect activate your ability to organize and reorganize some aspect of your life.

Mars Parallel North Node of the Moon

You have a dynamic energy about you that propels you forward in life. When in doubt, your ability to assess yourself must be called upon to give the extra effort to make the needed progress. You have a strong, forceful aspect to your physical nature that you can call on during moments of crisis.

Uranus Parallel Pluto

Your basic conflicting urges from deep within your being will rush forward every so often, causing you to make dramatic changes in your life. As you get used to letting the need for uniqueness come forward and express itself, this aspect of your nature stops being so explosive and just becomes part of the inventiveness that makes you so fascinating.

Uranus Parallel Ascendant

Sudden changes in your environment seem to mirror the deep nervousness that colours your personality so mightily. It takes a good deal of detachment to accept the coming and going of so many unusual people from your life. It is difficult to understand that your desire for uniqueness and personal freedom is responsible for having you spend so much time by your self. As you harness your impulses life becomes more balanced while still being quite spontaneous.

Pluto Parallel Ascendant

You have tremendous tenacity of purpose underlying your personality. When forced into an uncomfortable position by life circumstances you are capable of holding out for a point of view or a position in life that is out of step with outer circumstances for a very long time. You have extra energy when an emergency strikes, but, you may need much practice to be able to access this inner force at will or even when you feel you need it.

F. YOUR KARMIC DIRECTION

The Moon's North Node is an all encompassing and instructive point of synthesis in the chart; we could easily start or end our analysis with this one single factor.

Because this indicator is so all inclusive it most shows your karmic direction in life. The sign placement of your North node points to your destiny. When your actions, interests, and values are structured by this position, your general sense of personal well being improves. The house placement of the North Node of the Moon indicates or points to an area of life, an arena of experience. By confronting, even augmenting this arena you can inadvertently improve every aspect of your life. By dealing with issues connected to the North Node placement in your chart your general character strengthens and refines.

North Node of the Moon in Taurus

Practical concerns and involvement with material progress better your self-esteem which in turn better your life. Concentrate on simple basic principles and patiently accumulate security. Your foundations in life tend to be ignored as your energy is absorbed in overly personal projects. Let the passions of your heart and mind give way to a more matter of fact, simple, detached, and stable pattern of action; be less reactive, more patient and self satisfied.

North Node of the Moon in Taurus and in the Eleventh House

Emotional extremes become an easy mechanism of self-display, but your personal growth suffers by your inattention to the needs of others and your lack of practical sequencing. Learn to be peaceful and attentive to the larger picture of what you really want. Practical and humanistic values power you forward in life after you become calm in your immediate circumstances. This is necessary in order to see what is really important to you in the long. Only then is it possible with the ingredient of time for you to achieve your objectives. Your emotions and vanity can easily give you a venue to express your self-dramatization but seldom lets you get to your goal.

TABLE OF DEFINITIONS

These are some basic astrological definitions. Reading through this material can enhance your understanding of your INDRA report. You may want to take up a more serious study of these symbols as a preliminary step to a study of all of life through astrology.



THE PLANETS

The Sun and the Moon - Basic central core of the personality. These two bodies represent how we make decisions, how we act, and what we value.

Mercury, Venus, and Mars - The personal planets. These planets indicate our everyday concerns, our interaction with others, and our immediate environment.

Jupiter and Saturn - The planets of the culture. These planets represent our ability to interact with our society and its laws and values.

Uranus, Neptune and Pluto - The planets of our higher evolution. These planets show our ability to focus on issues that transcend our immediate life and culture.

THE SIGNS

Fire Signs - Aries, Leo, and Sagittarius

Earth Signs - Taurus, Virgo, Capricorn

Air Signs - Gemini, Libra, Aquarius

Water Signs - Cancer, Scorpio, Pisces

Cardinal Signs - Aries, Cancer, Libra, and Capricorn

Fixed Signs - Taurus, Leo, Scorpio, and Aquarius

Mutable Signs - Gemini, Virgo, Sagittarius, and Pisces

THE HOUSES

1st - Your personal appearance and your immediate environment.

2nd - Your self worth and your orientation toward the material world.

3rd - Your integration of basic experience and ability to learn.

4th - Your home and family.

5th - Children, romance and creative expression.

6th - Work, health and your facility with detail.

7th - One on one relationships. Marriage and partnerships.

8th - Community resources, sex, ultimate issues, financial institutions.

9th - Foreign travel, higher education, ethics and legal principles.

10th - Career and social standing.

11th - Friends and higher aims in life.

12th - The unconscious and social institutions.

The Ascendant - The beginning of the first house.

The Midheaven - The beginning of the tenth house.

TABLE OF DEFINITIONS - continued.



THE ASPECTS

Basic classification of aspects

Hard or difficult aspects. - Semi-square, Square, Sesquiquadrate, and Opposition. These are the aspects that help us recognize the ingredients in our personality that need changing.

Easy or soft aspects. - Trines and Sextiles. These are the aspects that express our talents and skills.

Growth aspects. - Semi-sextiles and quincunx. These are aspects that give us opportunity to grow. They indicate long term development of some key aspect of your personality and behaviour for this life time.

Power aspects. - Conjunctions, Parallels, and Contra-parallels. These are the aspects that show energy, force, reorganization and transformational ability.

Circumstances of the planets by aspect

Afflicted - A planet is called afflicted when it has only hard (difficult) aspects. These planets represent our greatest challenges and our more promising areas of growth.

Unaffiliated - A planet is unaffiliated when it is not limited to only hard aspects. This can mean that the planet has no aspects, has only easy aspects, or has both hard and soft aspects.

Well Aspected - A planet is called well aspected when it has no hard aspects. This shows ease of expression and a certain ability to bring the ingredients symbolized forward into life with little or no conflict.

Special points in your chart

Ascendant - This is the same as the cusp of the first house. The Ascendant refers to your physical body and how you meet the world, how you present yourself.

Midheaven - This is the same as the cusp of your tenth house. The Midheaven refers to how we rise and fall in life, our social position and our orientation to our family, culture and history.

Moon's North Node. - Our direction in life. How we form relationship bonds with the environment as well as people.

*** THE PLANETARY POSITIONS IN YOUR CHART****



SUN position is 2 deg. 48 min. of Scorpio
MOON position is 29 deg. 12 min. of Pisces
MERCURY position is 21 deg. 19 min. of Scorpio
VENUS position is 16 deg. 51 min. of Scorpio
MARS position is 14 deg. 16 min. of Leo
JUPITER position is 0 deg. 37 min. of Sagittarius
SATURN position is 21 deg. 21 min. of Leo
URANUS position is 25 deg. 55 min. of Gemini
NEPTUNE position is 11 deg. 22 min. of Libra
PLUTO position is 14 deg. 51 min. of Leo
N. NODE position is 23 deg. 32 min. of Taurus
ASCENDANT position is 29 deg. 49 min. of Gemini
MIDHEAVEN position is 5 deg. 07 min. of Pisces

***** HERE ARE YOUR HOUSE CUSP POSITIONS *****

1ST HOUSE CUSP position is 29 deg. 49 min. of Gemini
2ND HOUSE CUSP position is 29 deg. 49 min. of Cancer
3RD HOUSE CUSP position is 29 deg. 49 min. of Leo
4TH HOUSE CUSP position is 29 deg. 49 min. of Virgo
5TH HOUSE CUSP position is 29 deg. 49 min. of Libra
6TH HOUSE CUSP position is 29 deg. 49 min. of Scorpio
7TH HOUSE CUSP position is 29 deg. 49 min. of Sagittarius
8TH HOUSE CUSP position is 29 deg. 49 min. of Capricorn
9TH HOUSE CUSP position is 29 deg. 49 min. of Aquarius
10TH HOUSE CUSP position is 29 deg. 49 min. of Pisces
11TH HOUSE CUSP position is 29 deg. 49 min. of Aries
12TH HOUSE CUSP position is 29 deg. 49 min. of Taurus